

Scale-Up Progressive Employment Informational Webinar



ExploreVR 
INSTITUTE FOR COMMUNITY INCLUSION, UMASS BOSTON

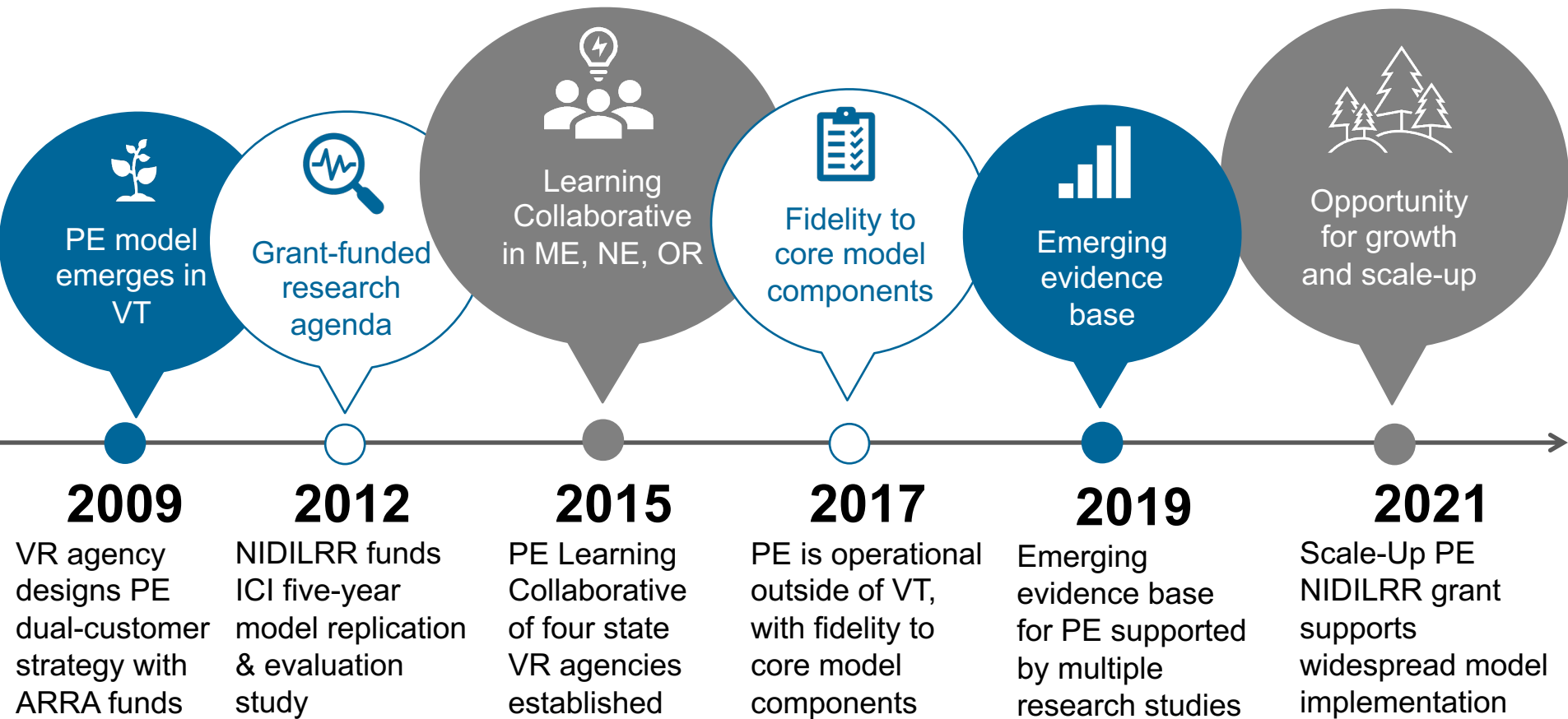
February 24, 2021

Today's Objectives

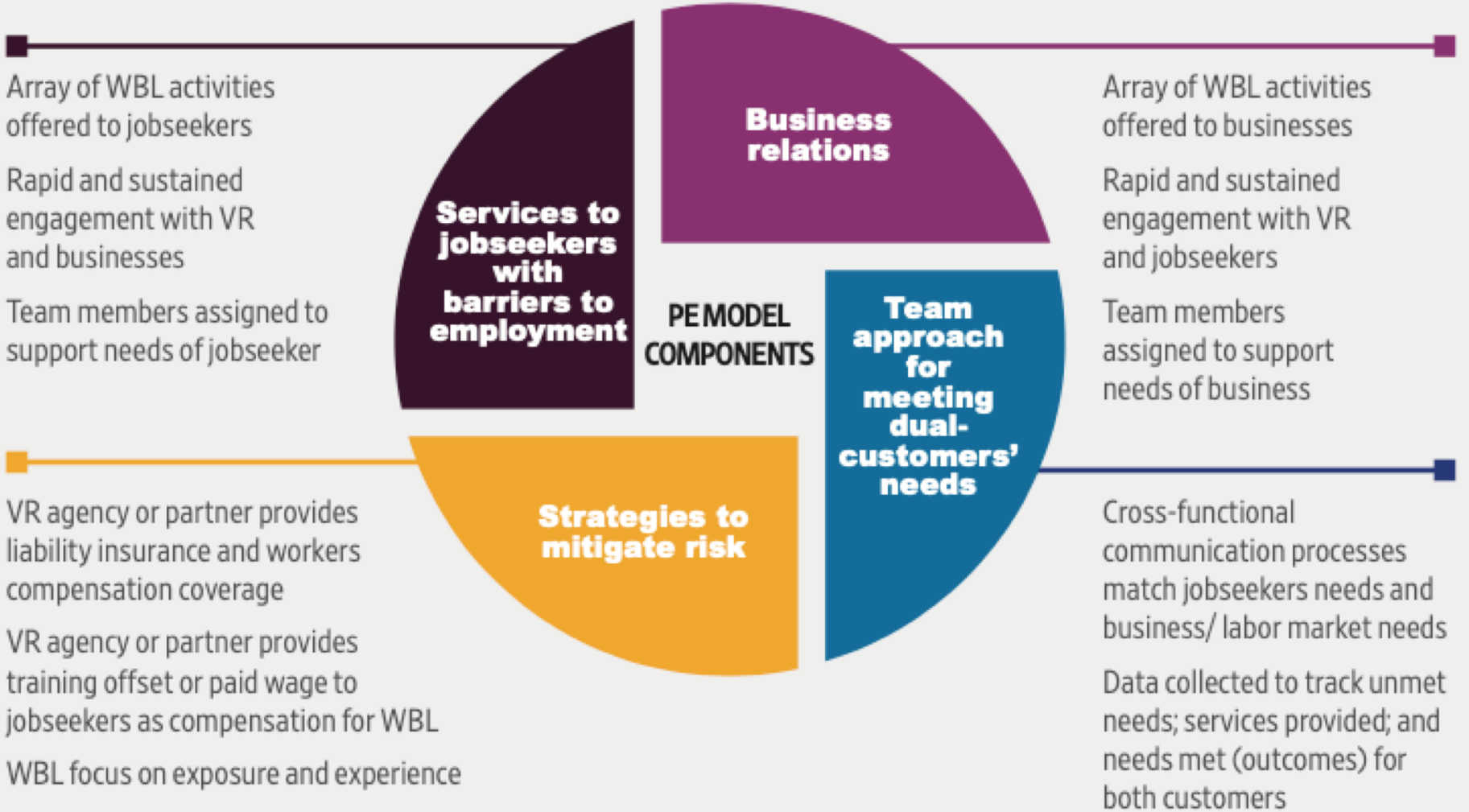
- Overview of the Progressive Employment (PE) Model
 - ❖ Kelly Haines, ICI
- Introduction to Scale-Up PE and participation opportunity
 - ❖ Julisa Cully, ICI
- Insight from State VR agencies that have implemented PE
 - ❖ Linda Mock, ICI (Facilitator)
 - ❖ Nathan Piper, VT DVR
 - ❖ Libby Stone-Sterling, ME VR
 - ❖ Angel Hale, OR CFB
 - ❖ Janet Drudik, NE VR

Scale-Up Progressive Employment is funded by the National Institute on Disability, Independent Living, and Rehabilitation Research grant #90IFDV0019

Timeline for PE model development



The PE model is a dual-customer, team approach that uses work-based learning (WBL) strategies to meet the needs of businesses and jobseekers with barriers to employment.



Scale-Up PE

Expand the PE Learning Collaborative

- Cross-state forum to solve problems, identify and apply solutions
- ICI will invite 3-4 new state VR agencies to join current members

Provide Subject Matter Expert Support

- Work with ICI staff with knowledge of PE model and VR policy and operations
- Develop a PE implementation plan that fits your state agency

Develop Virtual Learning Resources

- Expand ExploreVR.org to house learning resources and online community
- Knowledge Translation links lessons learned from research to practice

Evaluate Impact and Fidelity

- Partner with Mathematica to use VR Coach tool to measure outcomes
- ICI Fidelity of Implementation Toolkit helps agencies stay on track

Progressive Employment Learning Collaborative

The **Progressive Employment Learning Collaborative** brings members together in a cross-state forum to solve problems, identify and apply solutions, and measure outcomes and results through research and evaluation activities.

State VR Agency Members include:



Training



**State VR Agencies
and CRPs**



**Technical
Assistance**



**Research and
Fidelity**



**Knowledge
Translation**



Evaluation

Coming soon: Call for new Learning Collaborative State VR Agency Members!



Recruitment

- Request for participation (RFP)
- Open to all state VR agencies and AIVRS programs
- Target: 3-4 VR agencies
- Selection criteria



A hand holding a magnifying glass over a city street at night, with colorful bokeh lights in the background. The magnifying glass focuses on a busy street scene with many neon signs and buildings. The background is filled with out-of-focus, colorful lights in shades of blue, orange, and green.

Application Questions

- Agency demographic Information
- Business engagement staff
- Work-based learning strategies
- Available resources (fiscal, personnel, etc.)
- CMS and ability to track data
- Other ongoing pilot projects or major initiatives

Coming Soon



- Follow-up Consultation
Call 3/31/2021@ 2 pm ET
- PE Learning Collaborative
RFP
- Webinar #2 on research
findings



Questions?

If you have any additional questions, please contact Kelly Haines:

Kelly.Haines@umb.edu

Thank you for your participation!

